

**SENTEY®**

WWW.SENTEY.COM



**S Y M P H**

ELITE GAMER SERIES

MULTILANGUAGE USER GUIDE

---

# SENTEY SYMPH

ELITE GAMER SERIES

## HEADSET GS-4530

---

Copyright©2013 Sentey. All rights reserved.  
For more information: [www.sentey.com](http://www.sentey.com) - [info@sentey.com](mailto:info@sentey.com)

---

TOLL FREE NUMBRER: USA 1-855-7SENTEY (1-855-773-6839)  
All other brand and trademark are the propeties of their respective owners.  
The product specifications are subject to change without notice.

# CONTENTS

- 4 INTRO
  - HOT FEATURES
- 5 HEADSET FEATURES
- 6 PRODUCT ACCESSORIES
  - SYSTEM REQUIREMENTS
  - PRODUCT SPECIFICATION
- 7 SOFTWARE INSTALLATION
- 10 MAIN SETTING
- 12 VIRTUAL SPEAKER
- 14 MIXER PAGE FUNCTION
- 15 EFFECT PAGE FUNCTION
- 17 KARAOKE AND MAGIC VOICE PAGE FUNCTION
- 19 INFORMATION PAGE
- 21 WARRANTY
- 22 LEGAL INFORMATION

## INTRODUCTION

### Welcome to the elite!

Experience today's amazing game titles as they were intended with the unbelievably lifelike features of the Symph™ Gaming Headset from Sentey. Utilizing Sentey's all new TRUDIGi® Technology, these high-end cans deliver incredibly rich sound through their explosive internal speakers. Allowing your blissfully astonished ears to harness every single bit of the true digital, 7.1 channel, noise canceling surround sound deliciousness.

Symph™ also offers up more customizable and ergonomic features than you could shake an 8000 DPI mouse at! Including an in-line controller, adjustable omnidirectional microphone, ultra-comfortable leather padded ear cups, and an adjustable headband for extreme gaming comfort!

With Symph™ from Sentey, you'll have your head in the game—like never before!

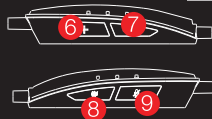
## HOT FEATURES

- Tru Digital 7.1 Channel Surround Sound.
- Ultra-comfortable Noise Canceling Ear Pads.
- Ergonomic Adaptive Leather Headband.
- Adjustable Omnidirectional Microphone.
- In-line Controller for Microphone Mute and Volume.
- Adjustable Headband.
- Gold Plated USB Connector.
- Ultra-Flexible Red 3 Meter Cable.

## HEADSET FEATURES



FRONT

INLINE  
CONTROLLER

## REFERENCES

- |                                 |                   |
|---------------------------------|-------------------|
| 1- Adjustable Headband          | 6- Volume +       |
| 2- Earpad                       | 7- Volume -       |
| 3- Microphone-in                | 8- Mic Control    |
| 4- Configurable Earcups         | 9- Volume Control |
| 5- USB Extra thick 3 mts cable. |                   |

## PRODUCT ACCESSORIES

- Documentation Instruction Manual + CD.
- Protective Travel Case.

## SYSTEM REQUIREMENTS

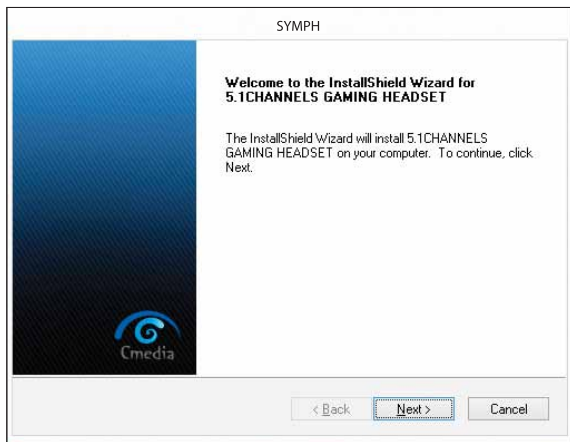
- Operating System Windows® 7®, Vista®, XP®.
- Connection Available USB 2.0 Port.
- Hard Disk Space Minimum of 5.5MB Available.

## PRODUCT SPECS

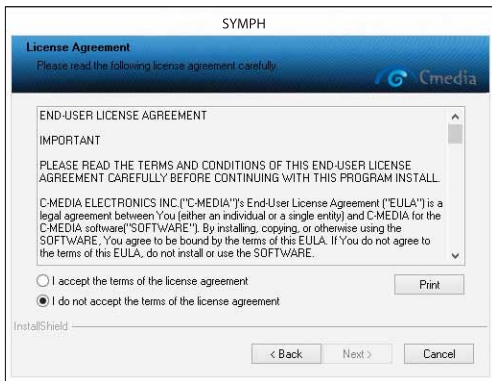
|            |                              |                                   |           |
|------------|------------------------------|-----------------------------------|-----------|
| Microphone | Mic Dimension                | ø 6.0 x 5.0mm                     |           |
|            | Sensitivity                  | -38dB±3dB                         |           |
|            | Directivity                  | Unidirectional                    |           |
|            | Impedance                    | 2,2 KΩ                            |           |
| Speakers   | Digital Virtual 7.1 Surround | Left                              | Right     |
|            | Drive Diameter               | ø40mm                             | ø40mm     |
|            | Impedance                    | 32Ω                               | 32Ω       |
|            | Frequency Response           | 20~20KHz                          | 20~20KHz  |
|            | Output Power                 | 200mW                             | 200mW     |
|            | Signal to Noise Ratio        | >50dB                             | >50dB     |
|            | T.H.D.                       | 1%                                | 1%        |
| General    | Sensitivity (S.P.L.)         | 102dB±3dB                         | 102dB±3dB |
|            | Cable Length                 | Ultra Flexible Red 3 meters cable |           |
|            | Connectors                   | Gold Plated USB connector         |           |
|            | Supper Enclosure             | Soft Black Matte                  |           |
|            | Dimmensions                  | 250 x 230 x 105mm                 |           |
|            | Weight                       | 304g                              |           |
|            | Warranty                     | 1 Year                            |           |

## SOFTWARE INSTALLATION

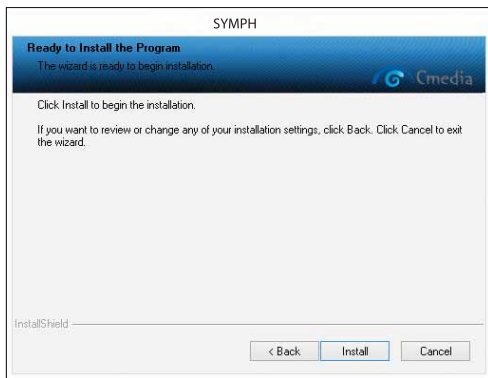
Insert the driver CD and double click on the setup.exe file if the auto run is disabled.  
Press "Cancel" if you want to quit the installation.



1. Enter into Sentey Symph™ installation process. Please to install go to "Next".

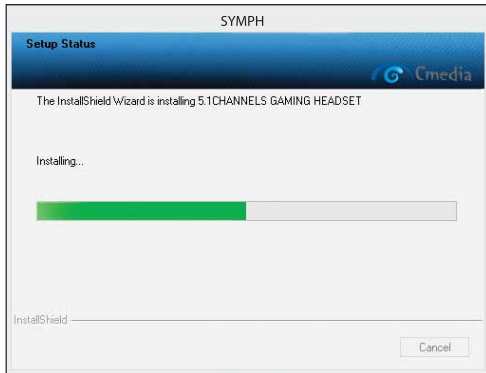


2. Please select Accept to install then go to "Next".

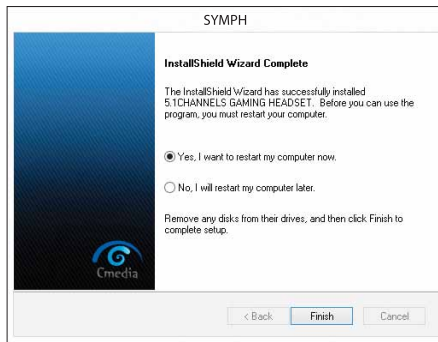


3. Please to start with installation go to "Install".





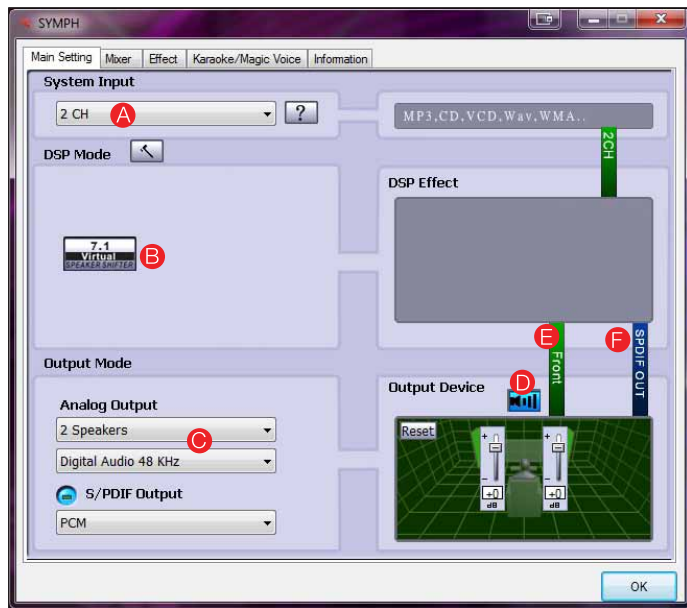
4. Please wait while setting the installation.



5. Please "Finish" window when the installation has been completed successfully.

## MAIN SETTING

You can configure the device how you want, please see all configuration as show below.



### A- System Input Device Options

The System Input option is to select the correct channel number for the audio content which you are going to play in order to have a precise audio output.



### ***B - Analog Output – DSP Mode***

The driver provides two DSP modes.

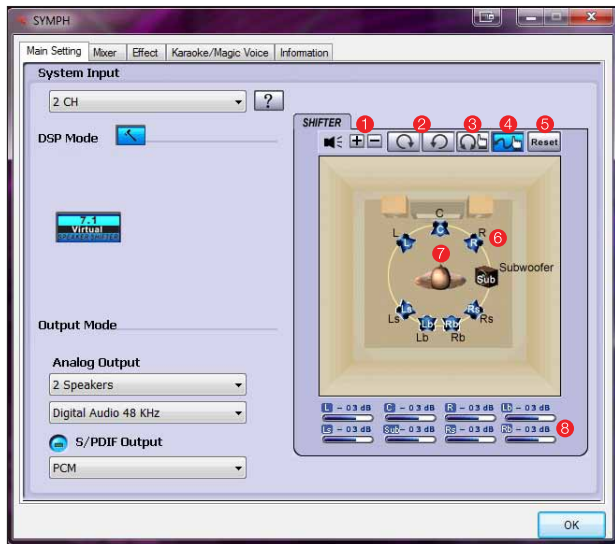
The button ( ) lets you switch the DSP Effect Advanced Setting on or off.

When the DSP Mode is turned on, you can see the DSP working layout on the right.

When the DSP Mode is off, the standard speaker test mode will be resumed.

## VIRTUAL SPEAKER

When the DSP Mode is turned on, click the button  to enable the DSP Effect as shown.



### 1. Volume Control:

Increase / decrease the volume of all channels by 1 dB for one step. (+4dB - 17dB)

### 2. Auto Rotation Mode:

The virtual speakers rotate clockwise or counterclockwise slowly.

### 3. Manual Rotation Mode:

Use the mouse to rotate the virtual speakers on the screen manually.

### 4. Manual Shifting (Free Moving Mode):

Use the pointer and click-and-drag to move the location of the individual virtual speakers.

5. Reset:

Reset the location of virtual speakers / virtual listener to default.

6. Virtual Speaker:

Each virtual speaker virtualizes one channel of the 7.1 channel speakers in the real world.

7. Virtual Listener:

The virtual listener virtualizes your position.

8. Volume indicator:

Indicate values for each channel.

When the DSP Mode is turned on, click the button  to enable the DSP Effect. The effect icon will be displayed in the DSP Effect section on the right.

### **C- Analog Output – Headphone Configuration**

Click the Advanced settings button  to set the advanced headphone setting.


1. Advanced Settings – Headphone

Swap headphone left/right output.

2. Manual Sound Testing:

Click the Headphone/Speaker diagram to test sound output sound manually.

### **D- Analog Output - Digital Volume Control**

The software provides the volume control function, click the “Digital Volume” Button  to enable the volume control bar.

1. Volume Control Bar:

Use the volume control bar to adjust the sound value for the headphone.

2. Volume Reset Button:

Click the “Reset” Button to return the headphone sound value to the default setting.

### **E- Audio System Status Bar**

The software provides a status bar to indicate the Audio system status.

Analog Channel - Indicate the audio system status of Analog Output.

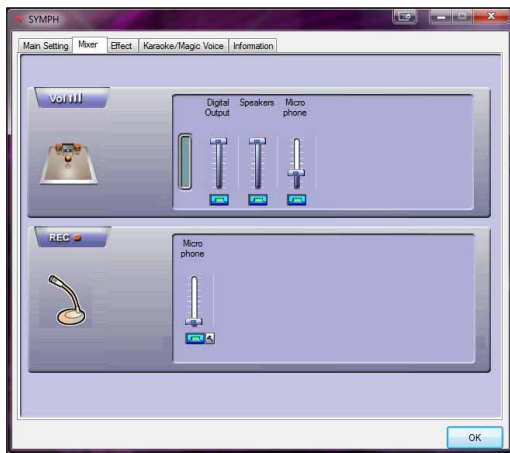
### **F- S/PDIF Output**

The Headset supports digital output. Click “S/PDIF Enable button”  to enable It.

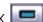
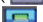
- Digital Audio 48 KHz – 48KHz 2CH digital PCM Data Output.

## MIXER PAGE FUNCTION



The built-in mixer controls the volume / recording / monitoring.



### *Playback and A-A Path Mixer*

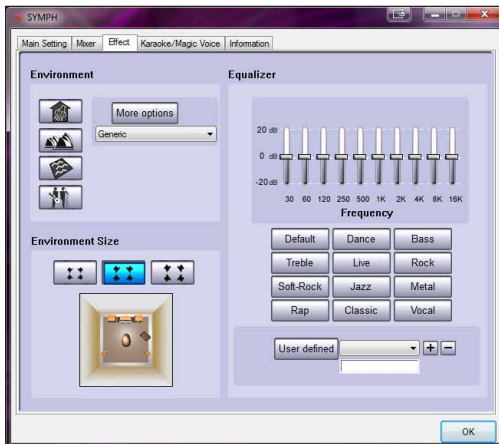
1. Playback configuration:  
Indicate Speaker or Headphone device.
2. Peak Meter:  
Indicate the instantaneous level of an audio signal.
3. Volume Control:  
Set the sound level or A-A path volume.
4. Mute/ Un-Mute Control:  
Select mute/un-mute.  
Mute - button is un-lit   
Un-Mute - button is lit 

## Recording Mixer

1. Active Recording Device:  
Indicate the recording resource device.
2. Volume Controller:  
Control the volume by individual recording device.
3. Recording Device Selector:  
Click the selector to set the recording source.  
Un-available - button is un-lit   
Available - button is lit 

## EFFECT PAGE FUNCTION

The features in this page provide various sound effects.



### 1. Environment:

Select an "Environment option button" or "Environment option list" for emulation that is implemented by producing the sound reflection and reverberation.

### 2. Environment Size:

You can change the "Environment size button" to simulate a larger or smaller space (default is medium). You feel the changes of space.

### 3. Equalizer (EQ) 10-Band:

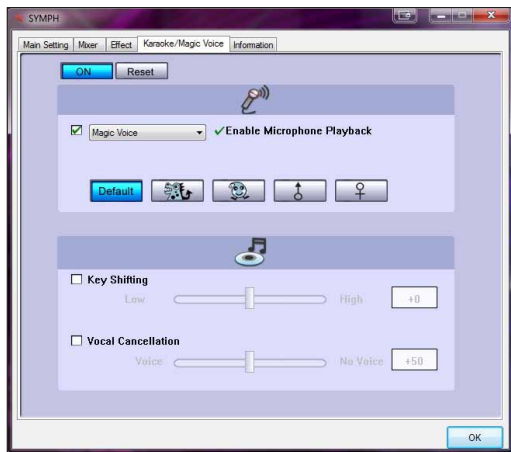
Select a preset mode for the equalizer that is designed accordingly. There are 12 preset modes such as Bass, Treble, Live, Rock, Jazz, etc.

You can change the gain setting for each band and give it a name in the following blank. Click "+" to add your new setting into the "User Defined" list. Click "-" to delete the settings.



## KARAOKE AND MAGIC VOICE PAGE FUNCTION

These functions let you experience voice processing. It is also great to use on VOIP applications and Karaoke speaker systems.



1. Click "ON" button to turn on the voice processing.
2. Click "Reset" button to return all settings to default volume.
3. Magic Voice Function Area – Provide "Microphone Echo" and "Magic Voice" functions.

a. Microphone Echo:

When singing a song, you may need the Voice Echo to make the singing more euphonious. You can select “Microphone Echo” to get the effect and adjust the volume of the echo sound. The range is -12dB to +12dB. For the first time when you turn on the function, the driver will select the microphone input as the recording source. Click “OK” to close this window as follows.

b. Magic Voice:

When you are talking to your friends using Messenger, VOIP, online game applications, you can use “Magic Voice” effects in the pull-down menu for fun. Only one voice type can be chosen at a time. When “Magic Voice” is selected; the layout will be shown as followed. There are five options: Default (no effect).

4. Karaoke Function Area - Provide “Key Shifting” and “Voice Cancellation” functions.

a. Key-Shifting:

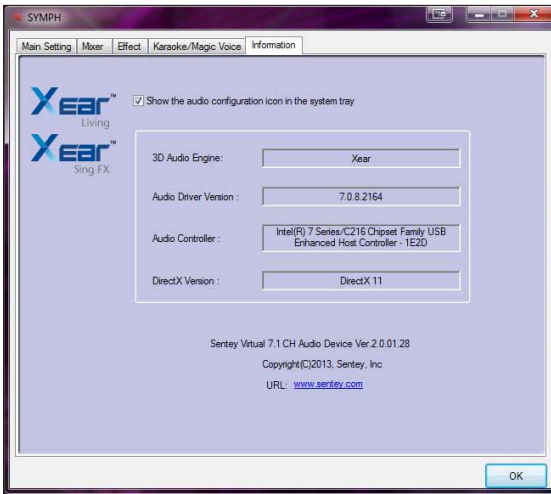
You can enable Key-Shifting for the Karaoke VCD or the music to make it suitable for your voice pitch. The range is -4 to +4 semitones.

b. Vocal Cancellation:

If the music source includes the original singer’s voice, try “Vocal Cancellation” function to cancel it (0~100).

## INFORMATION PAGE

This page records the driver information and the technologies trademark logo. You can get both hardware/software details.



TRU*Di*Gi™  
TRUE DIGITAL 7.1 CH. SURROUND



VISIT [SENTEY.COM](http://SENTEY.COM)

## WARRANTY

Your product comes with a limited warranty. For more information refer to [www.sentey.com](http://www.sentey.com)



# S Y M P H

## LEGAL INFORMATION

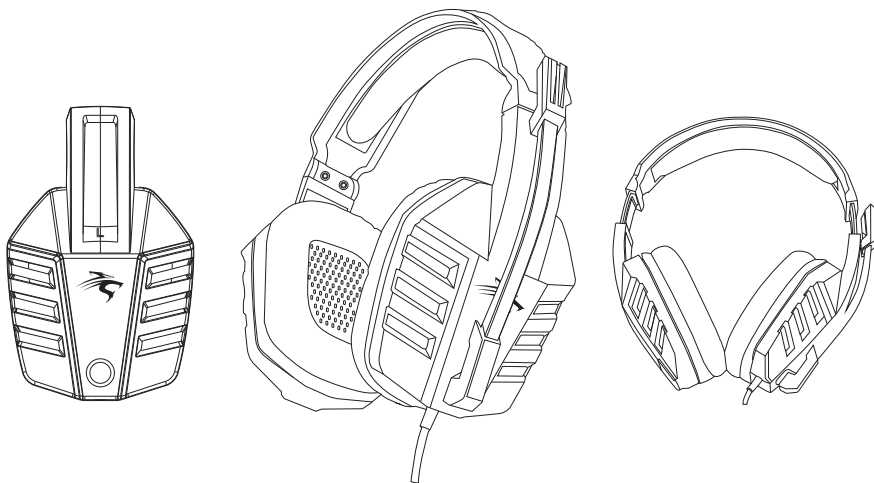
### **COPYRIGHT AND INTELLECTUAL PROPERTY INFORMATION**

©2013 Sentey Inc. All Rights Reserved. Sentey logo, Sentey with tiger logo and other trademarks contained herein are trademarks or registered trademarks of Sentey Inc. registered in the United States and/or other countries. Windows® and the Windows® logo are trademarks of the Microsoft® group of companies.

Sentey Inc. may have copyright, trademarks, trade secrets, patents, patent applications, or other intellectual property rights (whether registered or unregistered) concerning the product in this User Guide. Furnishing of this User Guide does not give you a license to any such copyright, trademark, patent or other intellectual property right. The Sentey Symph™ may differ from pictures whether on packaging or otherwise. Sentey no responsibility for such differences or for any errors that may appear. Information contained herein is subject to change without notice.

# SYMPH

ELITE GAMER SERIES



THE NEW GAMING HEADSET BY SENTEY



S Y M P H  
ELITE GAMER SERIES

HEADSET GS-4530  
[www.sentey.com](http://www.sentey.com)